



# TRACER<sup>VM</sup> Bluetooth Interface

## General Description

Tracer<sup>VM</sup> Bluetooth Interface collects, transmits and saves data from Tracer<sup>VM</sup> Base flowmeters installed in injection mold cooling circuits.

Flowmeters purchased separately are connected via cable to the Tracer<sup>VM</sup> Bluetooth Interface. The Interface provides power to each flowmeter and receives voltage signals for temperature and flow.

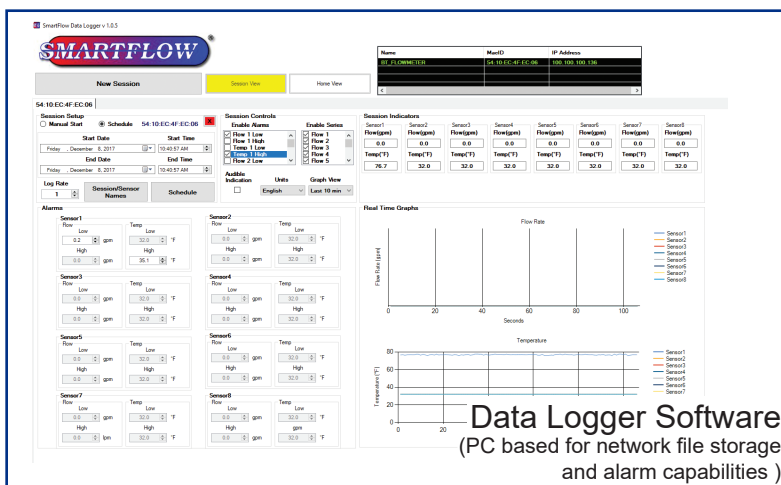
The Bluetooth Interface wirelessly transmits flow and temperature to display on a mobile device. Flow condition data log files can be created via app and saved on USB flash drive documenting the mold cooling water conditions.

The Interface also communicates over Ethernet connection to PC software for network file storage and alerts. The files are easily read into database software for reference or analysis. Scientific Molders can use data to confirm processing parameters and optimize cycle times and cooling water efficiency.

When used with PC software, a dry contact switch is available for connection to a peripheral or machine control to signal an alarm for out of limit cooling water conditions.



VMBTI-102



Data Logger Software  
(PC based for network file storage and alarm capabilities)



Tracer<sup>VM</sup> App  
(smartphone or tablet required, user provided, USB file storage)



The Apple logo and iTunes are trademarks of Apple Inc., registered in the U.S. and other countries. Google Play and the Google Play logo are trademarks of Google Inc.

*Design and specifications are subject to change without notice.*



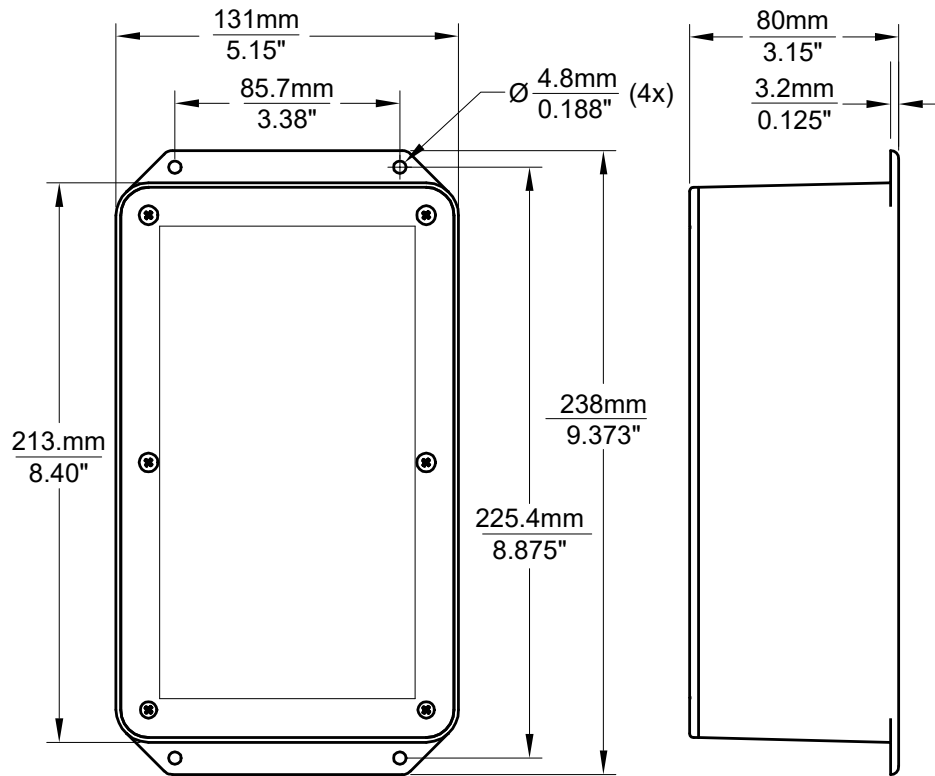
4500 E 142nd Street  
Grandview, MO 64030 USA  
Tel: 816-878-6675  
www.smartflow-usa.com



# SMARTFLOW<sup>®</sup> TRACER<sup>®</sup> VM Bluetooth Interface

Model Number: VMBTI-102

## Enclosure Dimensions

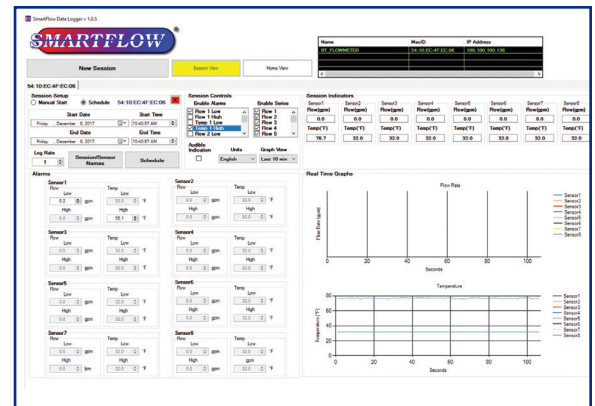


## Data Logger (PC Based Software)

The Data Logger Software is provided to you free of charge as a download from the product web page. The Data Logger displays temperature and flow rate data from up to 10 Tracer<sub>VM</sub> Interface Modules with each module on a separate tab.

Functions:

- Saves .csv file to specified location for archiving and analysis.
- Display and data logging options include:
  - \* Name Interfaces
  - \* Name individual cooling circuits in the session (display only)
  - \* Name .csv file
  - \* Manual or Scheduled duration
  - \* Selectable log rate between 1 and 3600 seconds
  - \* Metric or English units
  - \* **Alerts are disabled when recording is not active.** Set alerts and provide a dry contact switch for low or high temperature and flow rates. Switch can be connected to external device such as low voltage stack light or machine control.
  - \* View real-time graph for each Tracer<sub>VM</sub> Base unit. View data from each Tracer<sub>VM</sub> Interface module in individual tabs.



# SMARTFLOW<sup>®</sup> Tracer<sup>®</sup> VM Bluetooth Interface

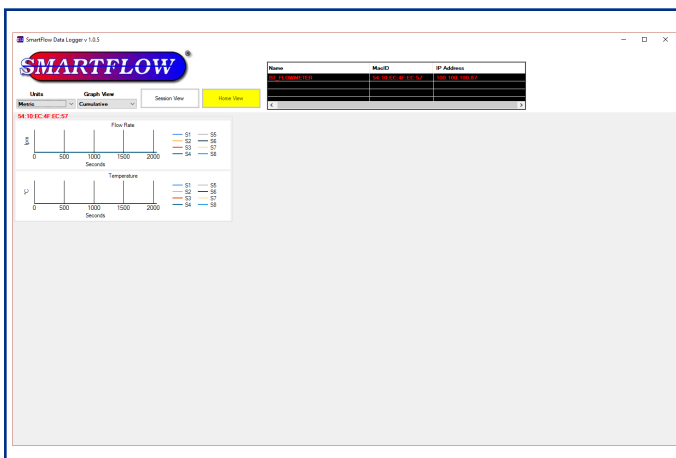
PC-Based **Smartflow Data Logger Software** provides temperature and flow process data that can be used in database software for reference and analysis. These data records are useful to injection molders maintaining compliance to regulatory requirements and quality control.

Two screen views are available: Home View and Session View.

## Home View

The Home View displays graphs of temperature and flow cooling water conditions for all Tracer<sub>VM</sub> Base flowmeters connected to TracerVM Bluetooth Interfaces.

Up to 10 Interfaces can be displayed graphically on one screen. The maximum number of Tracer<sub>VM</sub> Bluetooth Interface Units visible for selection is 30. The Home View can show overall health of cooling water lines across the shop floor. An unexpected value for flow or temperature can be seen quickly and may be an indication of a blocked cooling line or out-of-tolerance processing conditions resulting in poor molded part quality.



Home View

## Session View

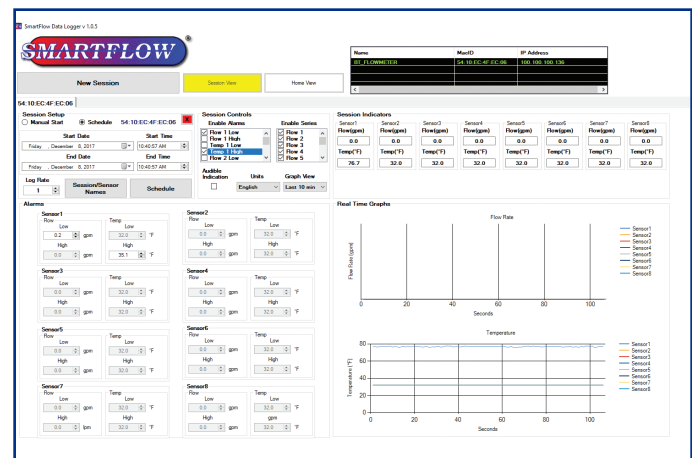
Session view displays one Tracer<sub>VM</sub> Bluetooth Interface with temperature and flow values for each connected Tracer<sub>VM</sub> Base flowmeter. A maximum of eight flowmeters can be viewed on the screen in Session View. A maximum of 10 Interfaces can be accessed as tabs in the session view at one time.

Log files are created in Session View. These can be started manually or scheduled as needed. Maximum recorded log length is 72 hours.

Session Controls box allow users to set alerts for low or high temperature and flow conditions. When data is being recorded, an alert will pop up on screen to notify the user when a parameter has been breached. Dry contact switch changes state to indicate the out of limit condition. The indicator will disappear as soon as the condition that caused the alert has cleared.

## Alerts and dry contact switch are disabled when session recording is not active.

Session Indicators at the top of the screen display current temperature and flow values from Tracer<sub>VM</sub> Base Flowmeters that are connected to the selected Interface. Real Time Graphs are also displayed for each flowmeter connected to the Interface. Unused flowmeter locations may be disabled as needed. Active Interface units are selected via tabs located near the top of the screen.



Session View

**For An Inside Look at Turbulent Flow and other helpful processing articles, visit the Technical Documents section of the [Smartflow-usa.com](http://Smartflow-usa.com) web site.**